

1st Quarter 2022 Exploration Results

ASPO : april, the 5th, 2022

Marc Blaizot

marc.blaizot@gmail.com

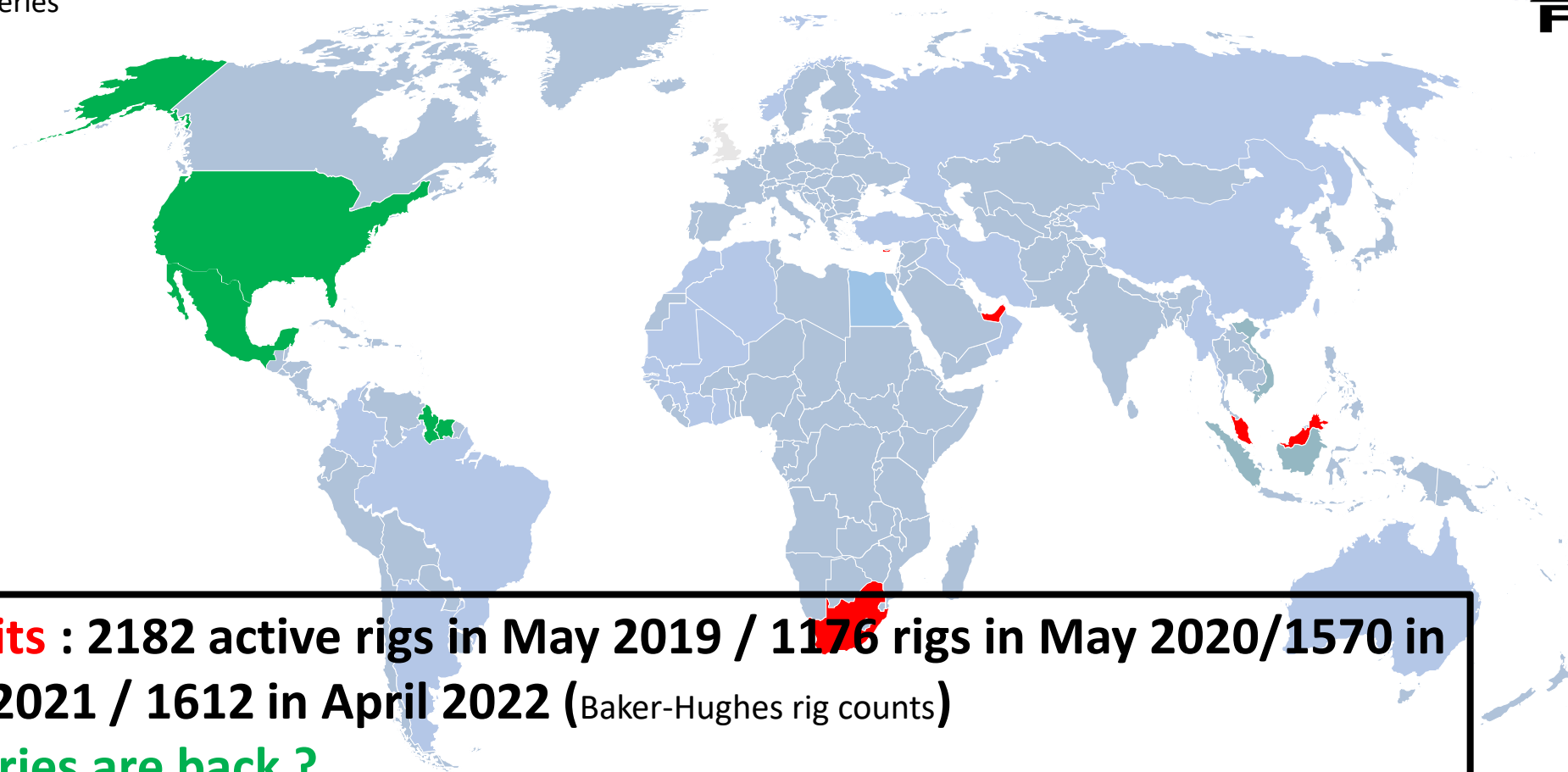


2022 Conventional EXPLORATION SYNTHESIS

Exploration / Appraisal



- OIL and
- GAS Discoveries



Drilling units : 2182 active rigs in May 2019 / 1176 rigs in May 2020/1570 in december 2021 / 1612 in April 2022 (Baker-Hughes rig counts)

Oil Discoveries are back ?

Oil discoveries : Namibia, Guyana, Suriname, US, Mexico,

Gas discoveries: Cyprus,

New discovery : Krabdagu for TotalEnergies in Surinam block 58

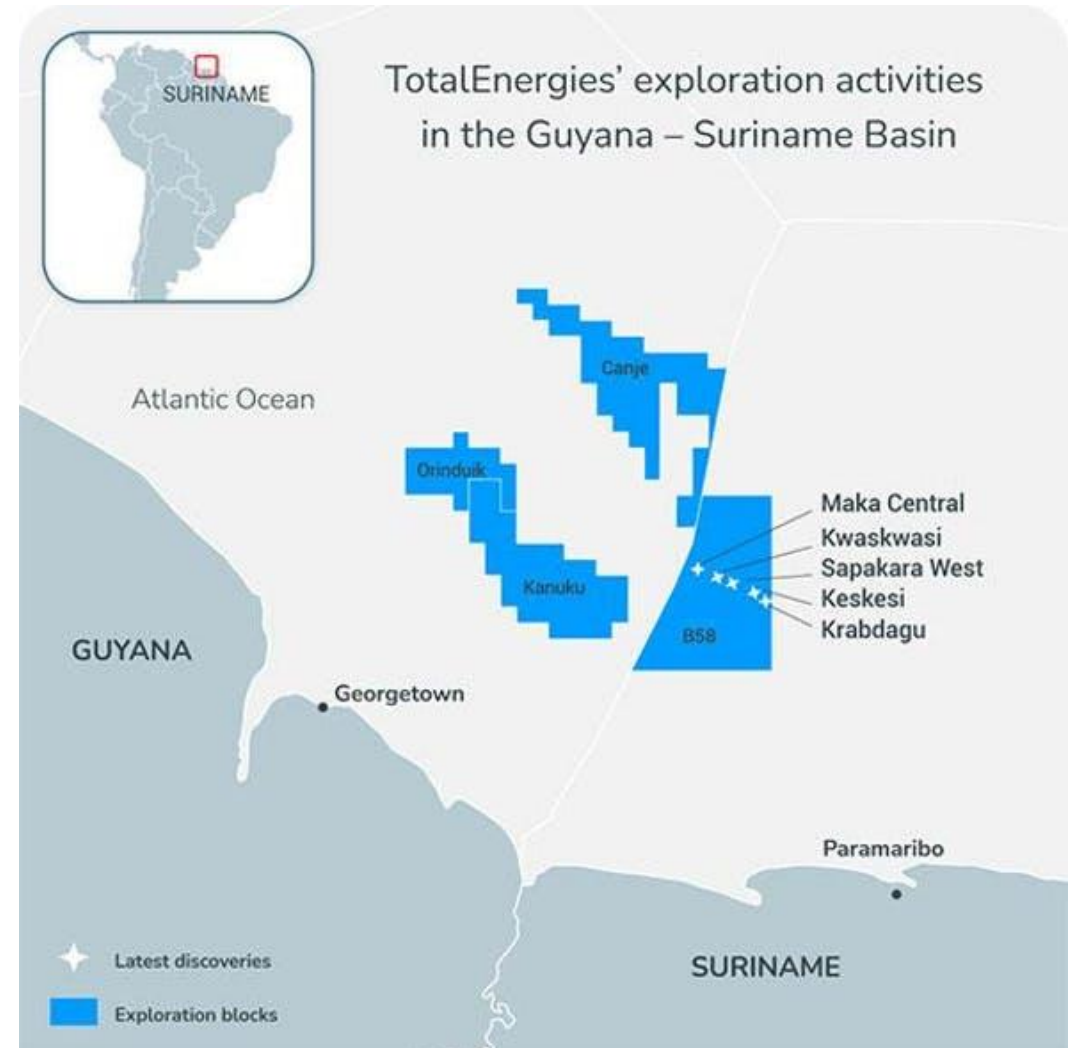
Krabdagu 1 : WD : 780 m ; TD : 5273 m !
TotalEnergies op, 50 %, Apache 50 %

5th discovery after Maka, Sapakara, Kwaskwasi, and Keskesi

90 m of oil pay in good Upper Cretaceous turbidites

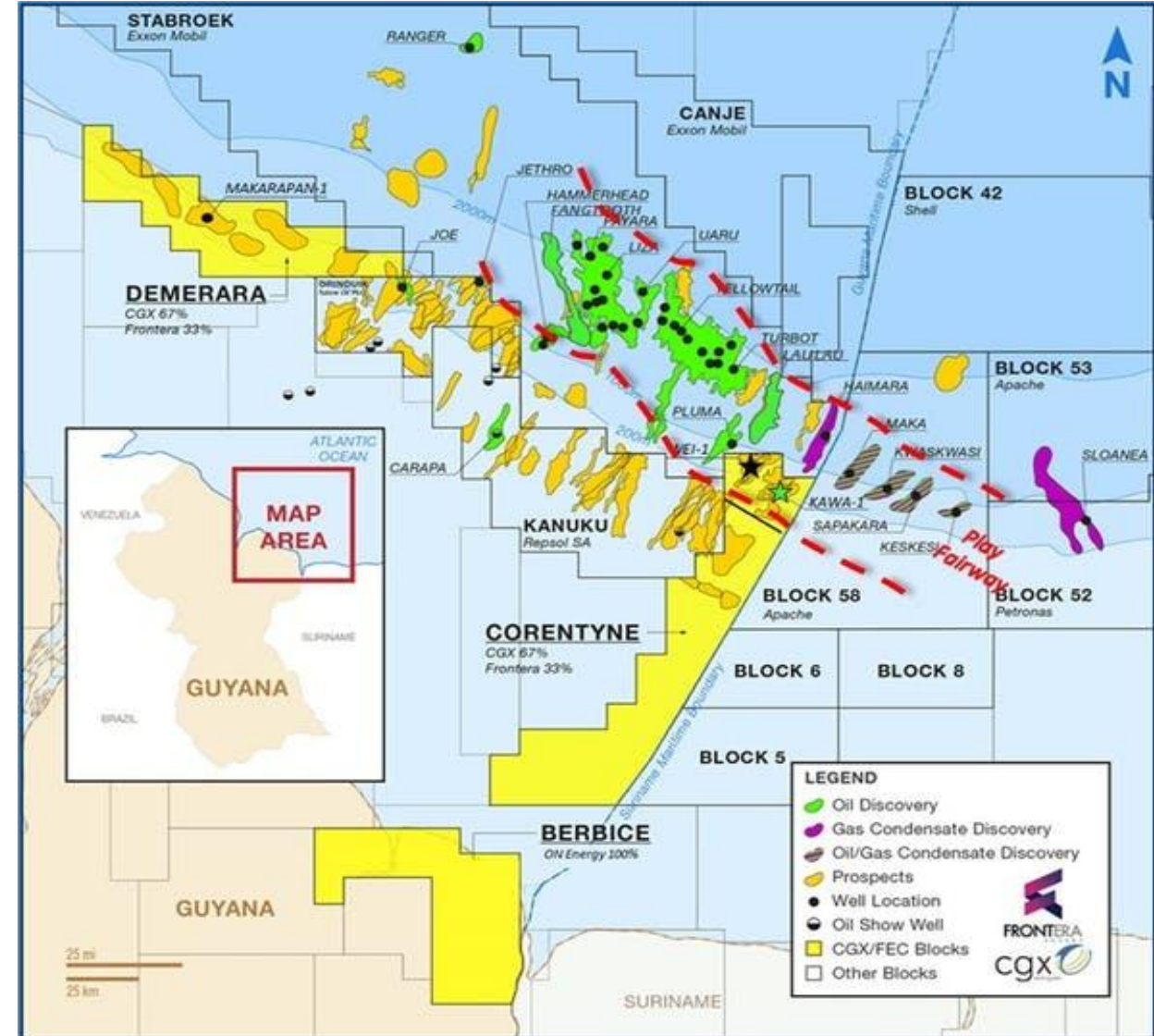
No test : is this reservoir ? similar to Sapakara south 1 tested in 2021

"A restricted flow test averaged 4,800 barrels oil per day (bopd) for 48 hours of 34-degree API with GOR of approximately 1100 scf/bbl,



Guyana-Surinam : similar Cretaceous sandy turbidites but

- Guyana and Surinam reservoirs seem to be different from the few published maps
- Younger and shallower in Guyana
- Large deep sea fans in Guyana like Lizza
- Restricted feeders in Surinam
- Multi source points : large ranges of poro-perm values ?
- Higher GOR in Surinam
- **10 Gbo in Guyana ; 2 Gboe in Surinam ?**



Namibia : Orange Basin : a new oil province in deep offshore Africa

Two discoveries announced 1st Quarter 2022

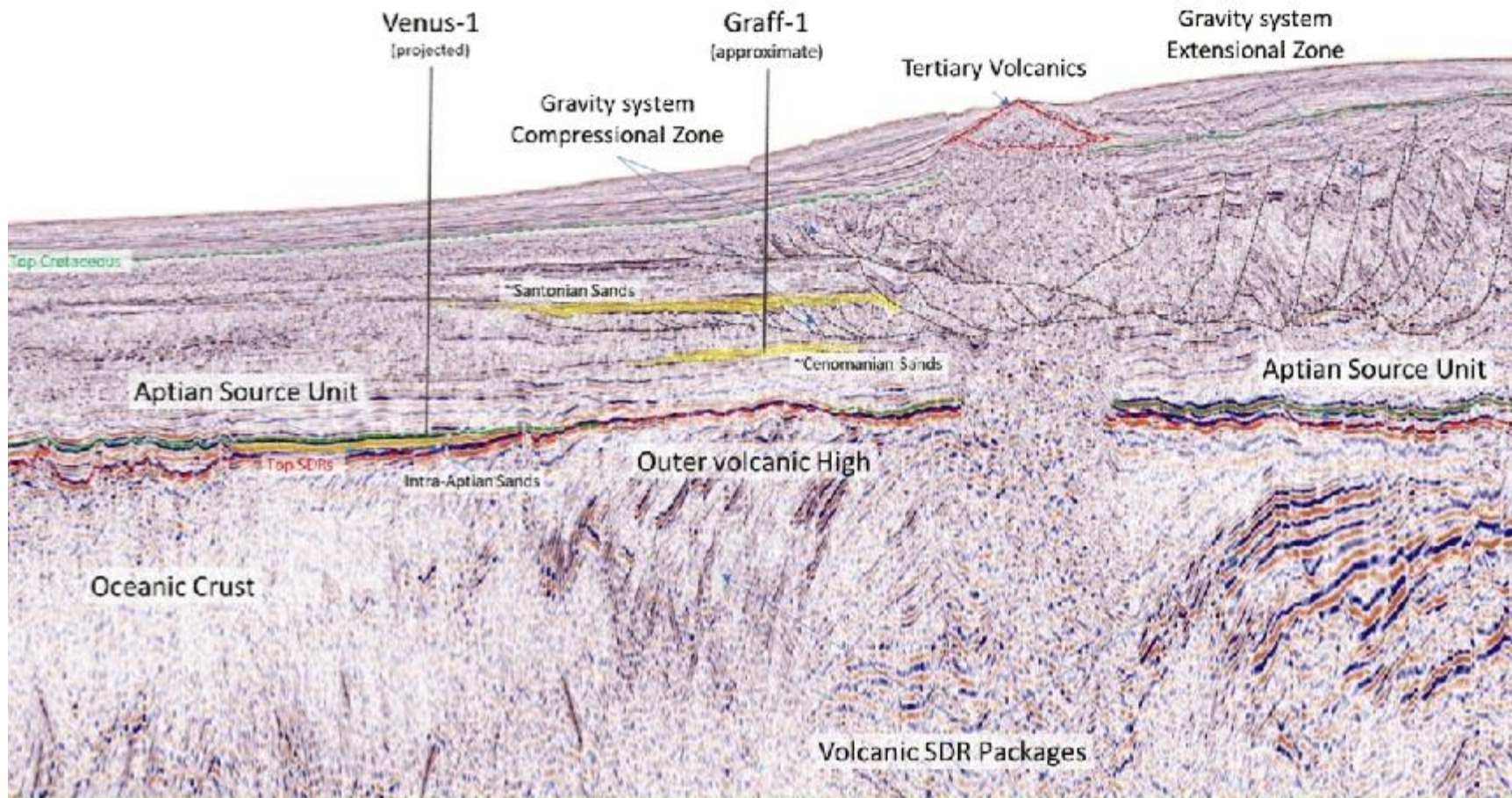
- **Graff 1 by Shell** : WD 2000 m ; TD : 5375 m Mixed Cenomano-turonian Cretaceous Turbidites plays – 300 Mbo Reserves ? Appraisal in progress
- **Venus 1 by TotalEnergies 40 % (QP 30 %/Impact 20 %, Namcor 10 %)** : Wd : 3000 m ; TD ; 6300 m Albian basin floor fan with 84 m of oil net pay
- Huge reservoir extension with AVO and DDC : 600 Km2 !
- **Reserves 3 Gbo ?** But not tested : Permeability ?

Venus 1

Graff 1



Namibia : Orange Basin : a new oil province in deep offshore Africa



ION SPAN™ surveys include contiguous data across the South Atlantic margin

